



windstar

ninetynine







The boy in the cape. It could be embarrassing to

some parents, but Don and Linda knew Jeff

would eventually outgrow it. Besides, he called

himself **“protector of the universe,”** and that’s not so terrible.

Jeff would spend his days defending his action figures,

his teddy and the family cat against all the forces of

evil. If he ever thought that danger was imminent,

he’d gather them all up and retreat to Mom’s

Windstar, which, of course, was surrounded by

an invisible, super-galactic safety force field.





Windstar SEL in Medium Royal Blue Clearcoat Metallic/Silver Frost Clearcoat Metallic two-tone.

Windstar SEL



Available Reverse Sensing System alerts the driver to the presence of certain objects near the rear of the vehicle when backing up slowly during parking maneuvers. Ultrasonic sensors in the bumper detect obstacles up to six feet to the rear. Beeping, with increasing frequency, indicates that Windstar is closing in on the object. Perfect for parallel parking.

One glance and you'll see a **more powerful, elegant stance.** Windstar's newly sculpted sheet metal is only the beginning, however. The flagship Windstar SEL has added a healthy dose of luxury and ride comfort to an already superbly equipped minivan. Driver-side and passenger-side **power sliding doors**, quad bucket seats with leather seating surfaces, and **Personal Audio System** are only a few of the SEL's many standard features. Windstar is equipped with Ford's latest design advances. Which go quite well with the new skin.



16" machined aluminum wheel.



Equipped with rear seat audio controls, the Personal Audio System, a feature of the Premium AM/FM stereo/cassette/single CD/Premium Sound, allows simultaneous listening enjoyment of separate audio inputs. For example, rear passengers can listen to a CD through headsets (not included), while front passengers listen to a cassette tape.



New Digital Message Center features compass, outside temperature display.



Windstar SE in Harvest Gold Clearcoat Metallic.

Windstar SE & LX



Windstar LX in Toreador Red Clearcoat Metallic with optional 4th door and 15" aluminum wheels.

If loading and unloading with three doors is a chore,

Windstar has responded: **four doors**. Now you have

the utility and convenience of an available second sliding door.*

Available **quad bucket seating**** and 6-way

power-adjustable driver's seat* make a trip

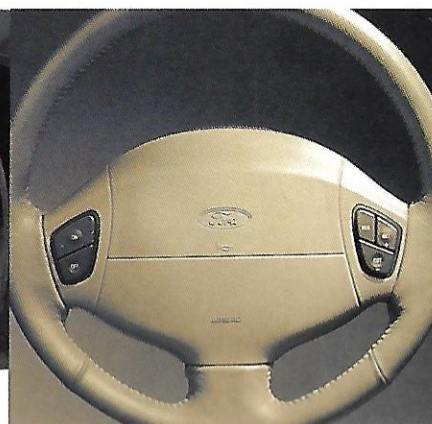
to the mountains as refreshing and ache-free as a trip to

the neighborhood market.



Available driver-side and passenger-side power heated mirrors help prevent cold-weather elements from obscuring your view (standard on SE and SEL).

New side-mounted cornering lamps (standard on SE and SEL only).



New leather-wrapped steering wheel (SE and SEL only).



Chrome grille adds refinement to your travels (SE and SEL only).



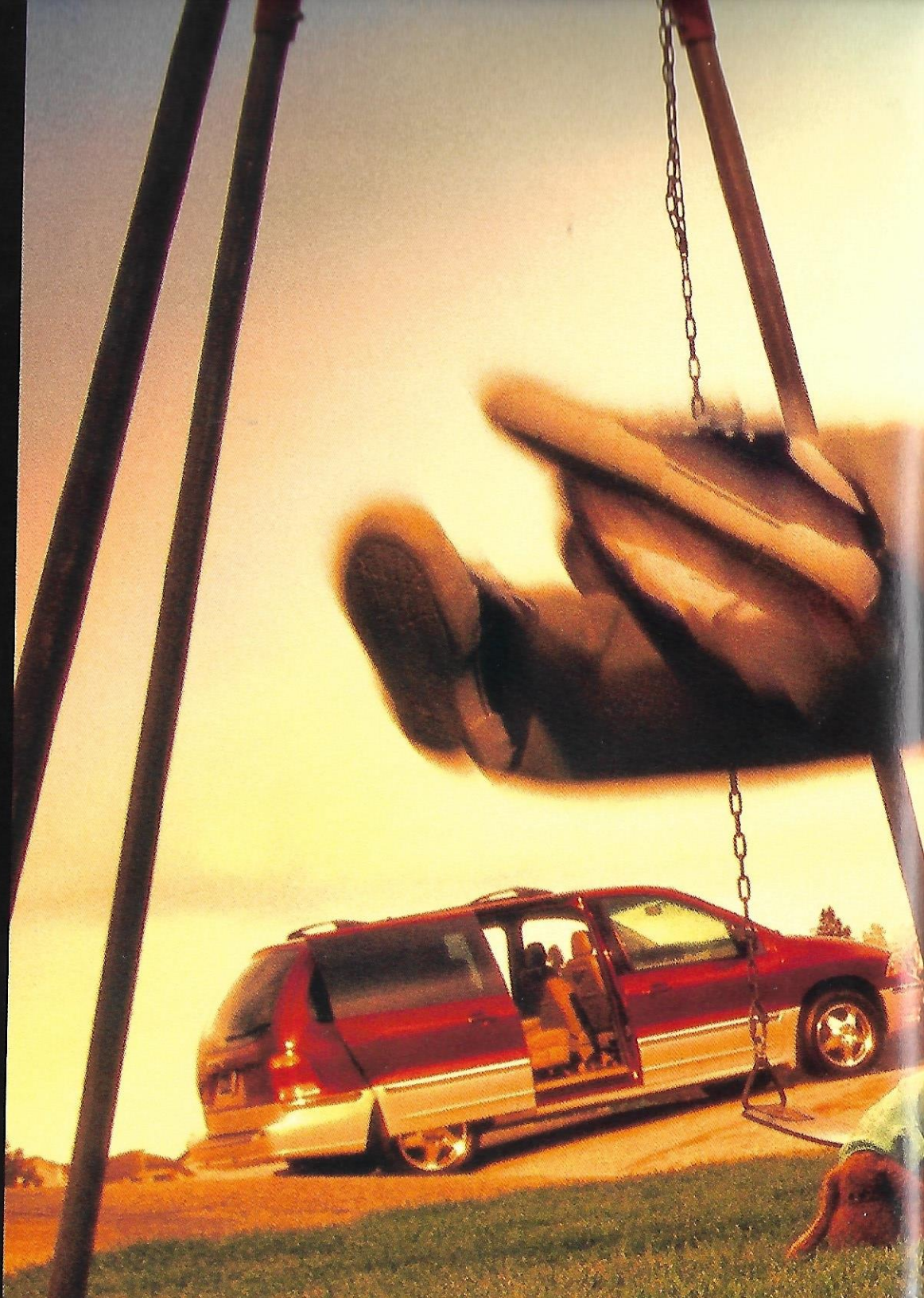
Full overhead console with optional system rear audio controls. "C" and ample storage space are (standard on SE and SEL).

"Just like when I was a kid," declared Dad. And he loaded everyone into the Windstar SEL for the 25-mile drive to the only drive-in around. They played on the swings and ate at the concession stand,

"just like Dad did when he was a kid." Everyone hurried

through all four doors as the movie started and, looking at two rows of excited faces, Dad declared,

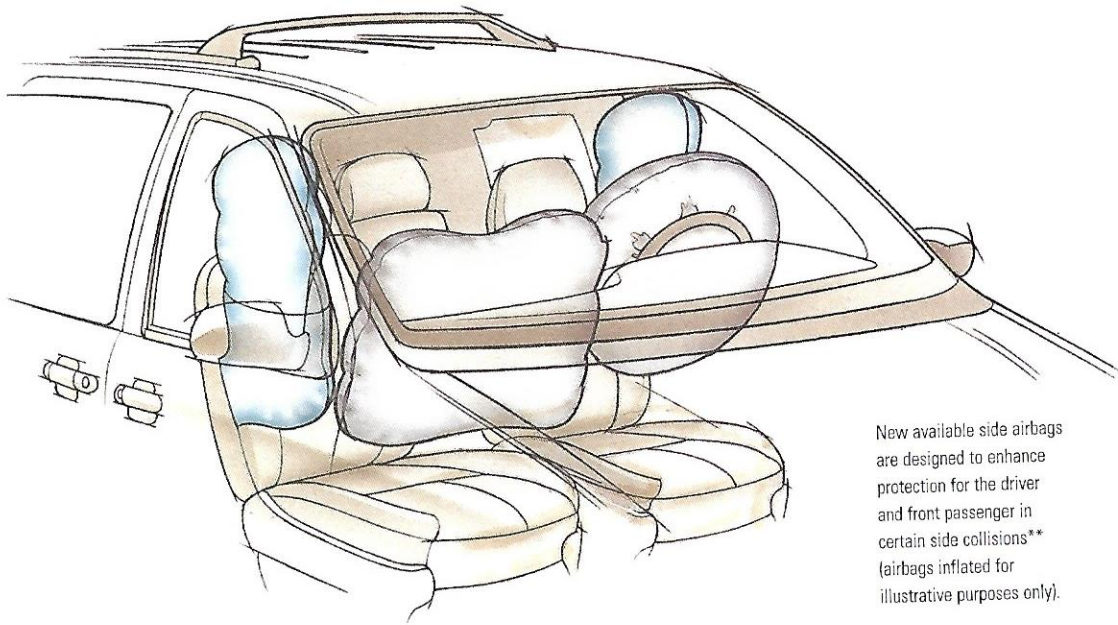
"When I was a kid, the only way to get this many people into the drive-in was to stash a couple of them in the trunk."



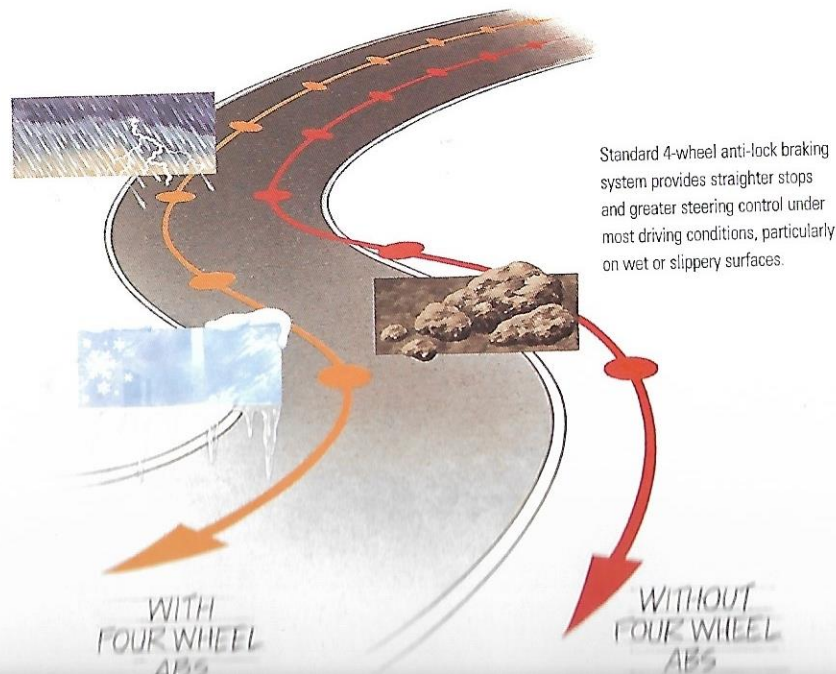




safety ★ ★ ★ ★ ★



New available side airbags are designed to enhance protection for the driver and front passenger in certain side collisions** (airbags inflated for illustrative purposes only).



Standard 4-wheel anti-lock braking system provides straighter stops and greater steering control under most driving conditions, particularly on wet or slippery surfaces.

Five stars. The highest government frontal crash test rating

for the driver and front passenger.* Windstar is the first minivan

to earn this rating. Windstar has **over forty standard**

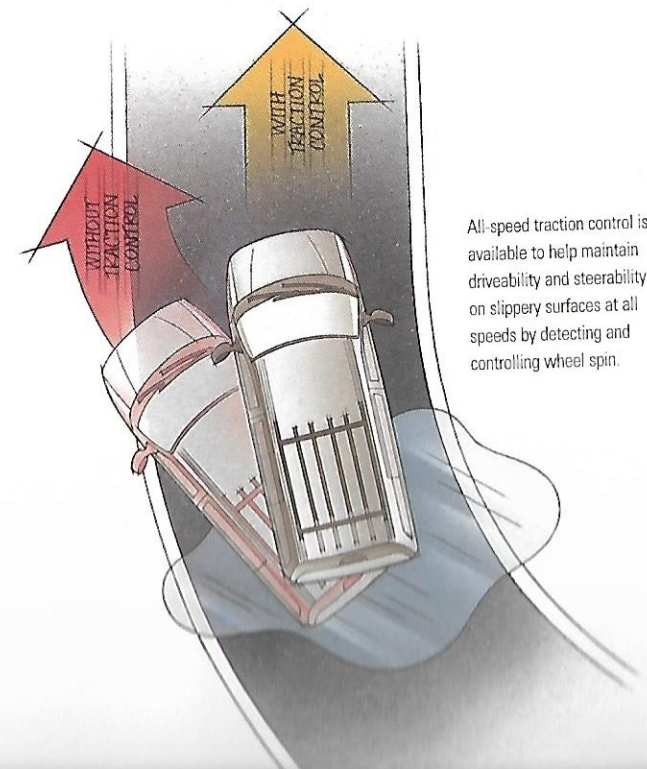
safety features. Including ABS, Second Generation

airbags, newly available front-row side airbags** and **side**

door intrusion beams, which protect against certain

side-impact collisions. Windstar is prepared for what's around

the corner, so you can travel with confidence.

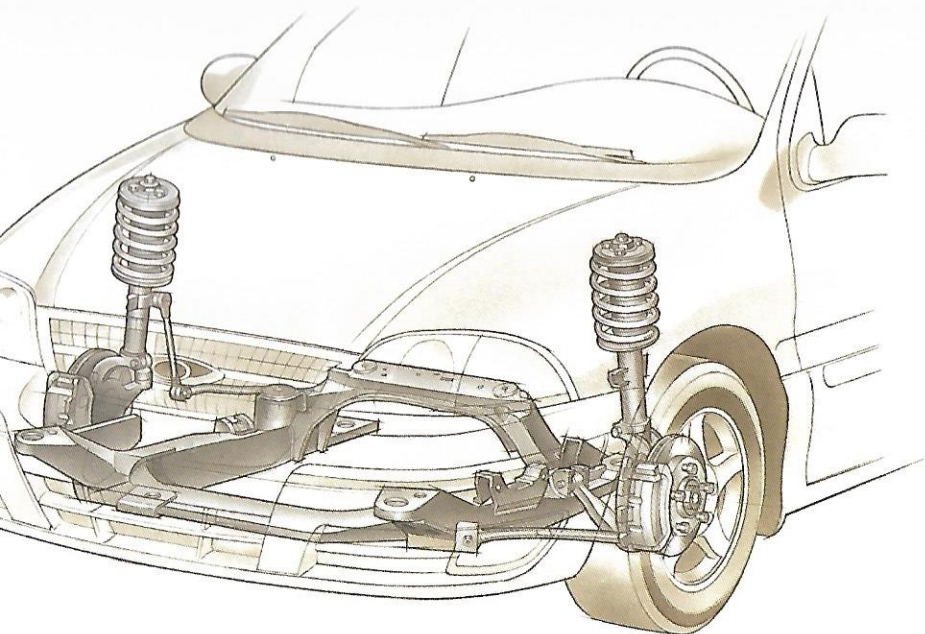


All-speed traction control is available to help maintain driveability and steerability on slippery surfaces at all speeds by detecting and controlling wheel spin.

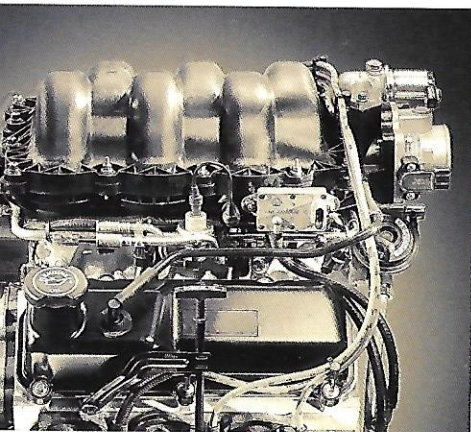


When activated, the "proof" rear door lock prevents the door from being opened from inside.

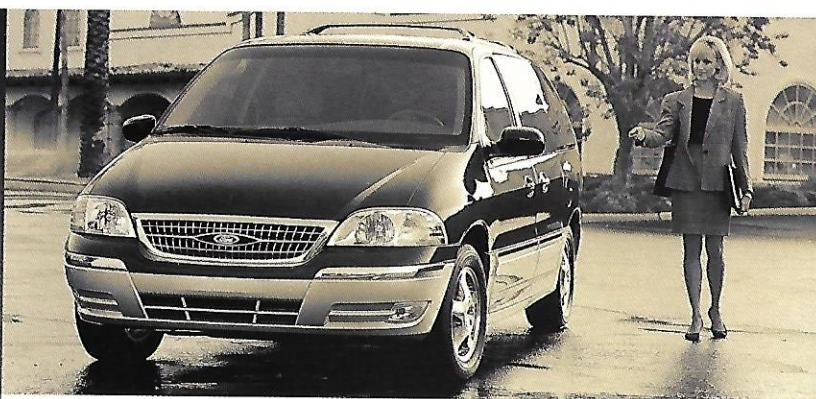
security



Upgraded front suspension geometry contributes to improved straight-ahead tracking. Revised suspension bushings and shock and strut valving reduce noise, vibration and harshness, providing a smooth, plush driving experience.



Windstar's V6 provides Split Port Induction for a balanced torque curve. It also features EEC-V, the latest generation of Ford's electronic engine control computer. EEC-V can perform thousands of complex calculations to optimize performance, driveability and emissions control.



Remote Keyless Entry option allows locking and unlocking of doors from a key fob remote (standard on SE and SEL).



Self-sealing tires allow you to tour in Windstar with confidence (available on LX and SE).

SecuriLock™ passive anti-theft system "interrogates" your encoded key.

Windstar's 200-hp, 3.8-liter V6 delivers more power than any other minivan. This engine provides a balance of low-rpm torque and increased power at higher engine speeds to help keep you out of harm's way. The SecuriLock™ passive anti-theft system, a standard feature that "interrogates" your encoded key, prevents would-be thieves from starting the engine. Finally, in case you forgot something, Windstar has SmartLock, a new system that helps prevent the driver from locking the doors while the key is in the ignition.

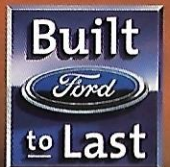
Windstar includes the assurance of a 24-hour emergency Roadside Assistance Program. (3-years/36,000 miles. See your dealer for details.)



safety & security

Ford Windstar is the only minivan to earn five stars in government crash tests four years in a row. This is the highest government frontal crash test rating for the driver and front passenger.* Ford is proud of this achievement because it means Windstar owners and their families can travel with an added measure of assurance. Convenience is important. Safety and security are essential.

*U.S. government data only useful in comparing vehicles within 500 pounds.



comfort



New available driver-side and passenger-side power sliding doors can be activated from two interior push-button locations and a remote key fob.

Windstar interior design philosophy is simple: offer passengers
a spacious cabin with lots of hip and shoulder room
and make it exceedingly comfortable. Start with available power
driver and front passenger seating with lumbar support. Add
optional second-row and third-row **reclining seat backs**,
seat-mounted cupholders, map pockets and grab handles.* Even
the air you breathe has to be cleaner. The Particulate Air Filtration
System **keeps out over 90% of pollen and**
dust particles larger than three microns.



ers on second-row and third-row bench
remove or install seats.*



New second-row seat travel provides more leg room and
easy entry for rear passengers.*



New available 6-way power passenger seat with lumbar
support (standard on SEL).



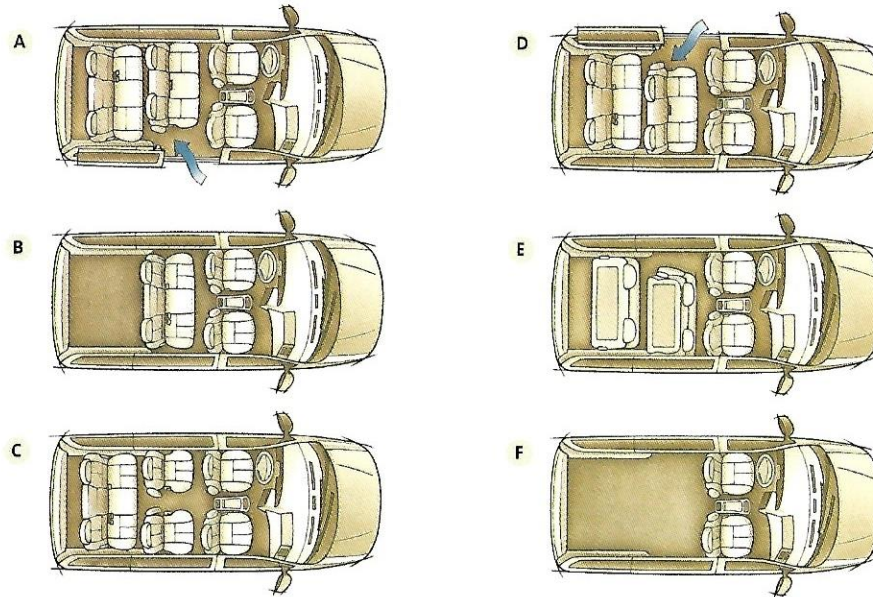
Available reclining seat backs on second-row bucket seats allow
adjustment of the seat back angles. Perfect for long trips.



Auxiliary climate control system. An effective
way for rear passengers to manage their
climate (standard on SE and SEL).

**Included in the Enhanced Seating Group. Standard on LX, SE and SEL.*

convenience



- A Driver-side second-row bench seat indexing.
- B Third-row into second-row.
- C Second-row bucket seats.
- D Passenger-side second-row bench seat indexing.
- E Second- and third-row forward-folding seats.
- F Second- and third-row seats removed.

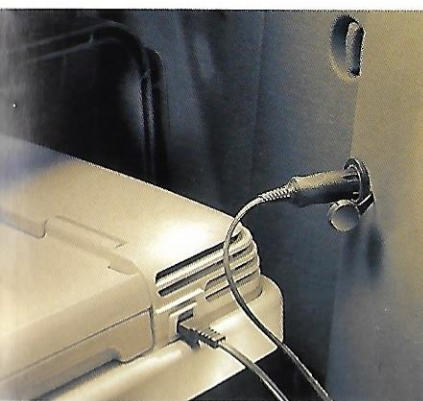
The new Windstar is designed to adapt to the way you travel.

Cupholders are placed within reach of most every seat.

Available **dual sliding doors** are complemented by a convenient power sliding door option. New **second-row seat indexing*** allows the bench to be placed to the

passenger-side or driver-side, so there's a clear path to the back.

Finally, Windstar is equipped with a standard 26-gallon fuel tank, which assures you of long treks between gas stations.



Two front-row 12-volt powerpoints and one cargo area 12-volt powerpoint are standard. (Portable refrigerator pictured.)



Available seat-mounted cupholders (second-row seats).



Optional floor console provides more room to organize your life.



New optional second-row forward-folding quad seat backs with integrated cupholders accommodate mugs and offer yet another place to stow your beverages.



Larger radio face, designed to be user-friendly.



Cargo area provides ample space for your third seat.



Windstar SEL interior with leather-trimmed quad bucket seats in Medium Parchment



It started out innocently enough. "Just up to my ankles," she said as they got out of the Windstar.

For their anniversary, Jim and Kate had packed up their Windstar and headed for the coast. When

the ocean appeared from

behind a bluff, they raced across the beach.

Kate reached the water first. And when Jim

caught up, she couldn't control the impulse

to splash him. Then came a bigger splash. Followed

by a whole lot of splashing. It would be a memorable

day at the beach. A very wet, but memorable day.





Paint Colors



Spruce Green
Clearcoat Metallic



Toreador Red
Clearcoat Metallic



Silver Frost
Clearcoat Metallic



Harvest Gold
Clearcoat Metallic

Vibrant White Clearcoat



Woodland Green
Clearcoat Metallic



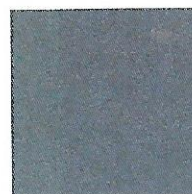
Medium Royal Blue
Clearcoat Metallic



Cabernet Red
Clearcoat Metallic



Chestnut
Clearcoat Metallic



Medium Steel Blue
Clearcoat Metallic



Deep Emerald Green
Clearcoat



Black Clearcoat



- A** 15" steel wheels with covers
- B** 15" aluminum wheels
- C** 16" 5-spoke painted aluminum wheels
- D** 16" machined aluminum wheels

EXTERIOR PAINT COLORS

INTERIOR TRIM

Medium
Parchment

Medium
Graphite

De

Windstar 3.0L

Toreador Red Clearcoat Metallic

•

Silver Frost Clearcoat Metallic

•

Black Clearcoat

•

Vibrant White Clearcoat

•

Windstar LX, SE 3.8L

Harvest Gold Clearcoat Metallic

•

Chestnut Clearcoat Metallic

•

•

Cabernet Red Clearcoat Metallic

•

•

Toreador Red Clearcoat Metallic

•

•

Spruce Green Clearcoat Metallic

•

•

Woodland Green Clearcoat Metallic*

•

•

Medium Royal Blue Clearcoat Metallic

•

•

Deep Emerald Green Clearcoat**

•

•

Medium Steel Blue Clearcoat Metallic

•

•

Silver Frost Clearcoat Metallic

•

Black Clearcoat

•

•

Vibrant White Clearcoat

•

•

*Available on SE only. **Available on LX only.

Windstar SEL 3.8L†

Harvest Gold Clearcoat Metallic

•

Chestnut Clearcoat Metallic

•

Cabernet Red Clearcoat Metallic

•

•

Spruce Green Clearcoat Metallic

•

•

Woodland Green Clearcoat Metallic

•

•

Medium Royal Blue Clearcoat Metallic

•

•

Medium Steel Blue Clearcoat Metallic

•

•

Silver Frost Clearcoat Metallic

•

•

Black Clearcoat

•

•

Vibrant White Clearcoat

•

•

†See your dealer for two-tone color combinations.

Sesame Street Safety Tips

- Always wear a safety belt while driving or riding in a car or truck.
- Never use a safety belt to restrain more than one person.
- Children 12 and under should always be properly restrained in the rear seats.
- Infants under 1 year and weighing less than 20 pounds should be carried in rear-facing child safety seats in the rear seat.
- Never place rear-facing safety seats in the front passenger seat if the vehicle is equipped with an activated passenger's airbag.
- Children up to 4 years of age and weighing between 20 and 40 pounds should be carried properly restrained in child safety seats.
- Never allow children (or any occupant) to slide the shoulder belt behind them.
- Seats should be moved as far back as practical from airbags.

BUCKLE UP WITH BIG BIRD!



© 1998 Children's Television Workshop. Big Bird © 1998 Jim Henson Productions, Inc.

Ford Motor Company and Sesame Street are proud to be working in partnership to educate families across the country about automotive safety. This strategic alliance is dedicated to spreading the word to young families about the importance of wearing safety belts and safe seating practices. So remember, kids sit in the back, and everyone buckles up!



Features and Options

Exterior	3.0L	LX	SE	SEL
3-door	S	S	—	—
Driver-side sliding door (requires Family Value Group on 3.0L)	0	0	S	S
Passenger-side power sliding door (requires remote keyless entry; full-size console; 4-door and Comfort Group on LX)	—	0	0	—
Driver-side/passenger-side power sliding doors	—	—	0	S
Solar tinted glass	S	S	—	—
Privacy glass	—	0	S	S
Roof rack	—	0	S	S
Hand-set high-gloss black mirrors (right-hand convex)	S	—	—	—
Electric remote high-gloss black mirrors (right-hand convex, requires Family Value Group on 3.0L)	0	S	—	—
Electric remote-heated mirrors (part of Family Security Package on LX)	—	0	S	S
15" steel wheels with covers	S	S	—	—
15" aluminum wheels	—	0	S	—
16" 5-spoke painted aluminum wheels	—	—	0	—
16" machined aluminum wheels	—	—	—	S

Comfort and Convenience

Reverse Sensing System (4-door only)	—	0	0	0
Floor console	—	0	0	0
Floor mats	0	0	S	S
Leather-wrapped steering wheel	—	—	S	S
Illuminated sunvisors	—	—	S	S
Powerpoints, two front row and one cargo area	S	S	S	S

Family Value Group: includes manual air conditioner; Power Convenience Group (power mirrors, power door locks, power windows, illuminated switches, accessory delay and Autolock); electric rear window defroster

Comfort Group: includes auxiliary climate control system; privacy glass; roof rack; mini overhead console (4-door only)

Electronics Group: includes message center; premium lighting (includes electrochromic mirror and autolamp); trainable transmitter

Light Visibility Group: includes 2nd-row reading lamps, 3rd-row reading lamps (SEL only), glove box lamp, front-row floor lamps, front map lamps (SE and SEL only), front door panel courtesy lamps (SE and SEL), B-pillar lamps, (included with remote keyless entry on 3.0L)

Interior Convenience Group: includes center

Comfort and Convenience (cont.)

Full overhead console (requires 4-door and Comfort Group on LX): includes conversation mirror; coin holder; sunglasses holder; garage door opener holder; reading lamp; dome lamp	—	0	S	S
Premium lighting (part of Electronics Group): includes electrochromic mirror; autolamp	—	—	0	S

Safety and Security

Second Generation driver and front passenger airbags	S	S	S	S
Front-row side airbags (requires Power Convenience Group and Enhanced Seating Group)	0	0	0	0
4-wheel anti-lock brake system	S	S	S	S
SecuriLock™ passive anti-theft system	S	S	S	S

Family Security Package: includes self-sealing tires (n/a on SEL); traction control; perimeter anti-theft, Remote Keyless Entry system (standard on SE, SEL); and heated mirrors (standard on SE, SEL)

Front- and 2nd-row manual 3-point lap/shoulder belts with adjustable D-ring height adjusters, 3rd-row 3-point lap/shoulder belts for outboard positions and lap belt for 3-passenger center seat position

Head restraints on front, middle and rear outboard seats

Power locks (part of Power Convenience Group) with illuminated switches (front doors)

Cornering lamps

Perimeter anti-theft (part of Family Security Package)

Childproof sliding door locks

Remote keyless entry (requires Family Value Group on 3.0L)

Seating

7-passenger seating	S	S	S	S
Tip/slide driver's seat (3-door only, part of Enhanced Seating Group)	0	S	—	—
6-way power driver's seat (requires Comfort Group and 4-door on LX)	—	0	S	S
Leather seating surfaces (includes power driver and passenger seat with lumbar support)	—	—	0	S
6-way power passenger seat (requires leather seats)	—	—	0	S

Enhanced Seating Group: includes 2nd/3rd-row adjustable seat tracks, 2nd/3rd-row seat recline, 2nd/3rd-row bench seat rollers, map pockets and grab handles on back of 1st-row seats, 2nd-row seat-mounted cupholders, driver tip/slide seat (3-door only)

Seating (cont.)

Front seats: dual high-back premium cloth buckets with integral head restraints, fore/aft manual adjustment, reclining adjustment, inboard armrests

Front seats: dual low-back premium cloth buckets with adjustable head restraints, 6-way power driver's seat, map pockets and grab handles on seat backs and inboard armrests

Rear seats: one 2nd-row 2-passenger bench seat with head restraints, one 3rd-row 3-passenger bench seat both with forward folding seat back and outboard head restraints

Rear seats: 2nd-row dual captain's chairs with recline and adjustable tracks, 3rd-row bench with recline, adjustable track and rollers (requires Comfort Group on LX)

Rear seats: 2nd- and 3rd-row leather seating surfaces

3rd- to 2nd-row seat interchangeability

2nd-row bench seat indexing easy-entry feature (4-door only)

Functional

3.0-liter V6 engine with electronic 4-speed automatic overdrive transaxle, Low Emissions Vehicle

3.8-liter V6 engine with electronic 4-speed automatic overdrive transaxle, Low Emissions Vehicle

Speed control/tilt steering wheel

Trailer Tow Electrical Package (required for all Class I towing): in-vehicle wiring harness, throw-in jumper wiring harness, module

Trailer Tow Package (Class II): auxiliary transmission cooler, heavy-duty battery, trailer wiring harness and module, full-size spare tire, heavy-duty halfshafts, high-speed ambient temperature package module

Engine block heater

Full-size spare tire

Audio

AM/FM stereo with four premium speakers

AM/FM stereo/cassette

Premium AM/FM stereo/cassette/single CD with Premium Sound includes Personal Audio System and rear seat controls (requires overhead console on 4-door LX)

CD changer prep (limited production option)

Competitive comparisons based on published 1999 competitive data.

Dealer Accessories



Trailer hitch bike mount maximizes cargo space for your next biking trip.



Cargo organizer helps keep your loose items securely stored.



Running boards with molded child step. Aerodynamically designed for function and style.



Underbody vehicle lighting. Illuminates the area underneath the vehicle for added security.



6-disc radio-controlled CD changer with "hardwire" connection provides quality sound.



Electronic compass/mirror automatically dims when it detects glare from trailing headlamps.



Roof rack with "quick release" for bikes and skis.

Windstar Wagon Dimensions and Capacities

Dimensions and Capacities	3-Door Wagon	4-Door Wagon
Front compartment (in.)		
Head room	39.3	39.3
Leg room (max.)	40.7	40.7
Hip room	57.9	57.9
Shoulder room	60.9	60.9
Rear compartment (in.)		
Second-row head room	41.1	40.7
Second-row leg room	38.8	38.6
Second-row hip room	60.9	66.4
Third-row head room	37.8	37.8
Third-row leg room	35.6	36.9
Third-row hip room	48.7	48.7
Cargo volume (cu. ft.)		
Behind front seats	145.7	148.5
Behind second-row seats	48.6	50.2
Behind third-row seats	19.2	19.2

Windstar and the Environment

Ford helps secure a cleaner environment.

single Windstar enters the showroom.

by assembling Windstar from a significant

of recyclable content and by incorporating

content materials. An example of our

is the Windstar fan, shroud and air-filter

are made with plastics composed in part

nylon carpets. Working with DuPont and

Ford avoids needlessly discarding "waste"

nation's landfills.

Windstar continues its responsibility at

the showroom. This year Ford is proud to

that Windstar will be classified as a Low

Vehicle (LEV) or better throughout the U.S.

The smog-forming emissions of the LEV

lower than Federal requirements for passenger

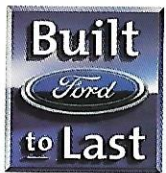
Promoting a clean environment helps e

Product Changes and Options Availability: Following publication of the catalog, equipment, options, prices and the like, or product delays, may have occurred in these pages. Your Ford Dealer is your best source for up-to-date information. Ford reserves the right to change product specifications at any time without incurring obligations. Options are available at extra cost and may be offered only in combination with other options. See your dealer for ordering requirements or limitations.

Roadside Assistance: Every new Ford includes the assurance of a 24-hour emergency roadside assistance program provided during the 3-year/36,000-mile bumper-to-bumper warranty. A copy of the limited warranty and complete details on this program which includes towing, tire change, jump start, or even help when you're locked out of your car.



Race For The Cure: As part of our ongoing commitment to breast cancer research and awareness, Ford Division is proud to continue its national sponsorship of the Susan G. Komen Foundation's Race For The Cure.



Visit the Ford website at www.ford.com